



Salma



COOLMAX®



SALMA-LBL



SALMA-LIC



SALMA-LGN



SALMA-FUX



SALMA-WHT



SALMA-BLK

The model **SALMA** is a trendy, comfortable closed shoe, fully adapted to the needs of healthcare professionals. The adjustable velcro straps on the back and top of the shoe ensure a firm fit. The closed heel increases the protection and safety. The soft part in Lycra avoids friction and irritation.

The *Move Up* collection is an ultra light design with antistatic properties and a slip resistant outsole. The breathable inner lining in Coolmax® keeps your feet cool and draws perspiration away from the skin. The outer material is leather and can easily be cleaned with a damp cloth. The anatomical shaped foot bed ensures a healthy support of the foot. This model has a 1.58 inch or 4 cm heel.



Salma

CE-standard
CE EN 20347 certified.



Coolmax®-lining

Keeps your feet cool and draws perspiration away from the skin.



Easy maintenance

The none lycra part of the shoe can easily be cleaned with a damp cloth.



Shock absorbing

The midsole in EVA garantees shock absorption.



Elegant 1.58 inch /4 cm heel



Leather

The outside of the shoe is leather.



Ultra light

The midsole in EVA is very light, flexible and shock absorbing. The average shoe weight is 8.81 oz or 250 gram.



Renewable insole

Renewable insole with Coolmax®. You can easily replace the insole regularly with our ultra comfortable insole OXYFOAM of use your own orthopedic insoles.



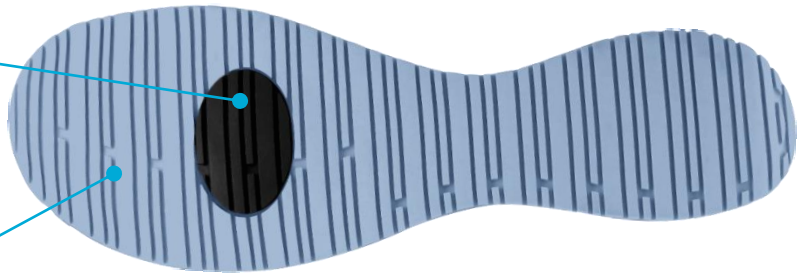
Anti-static ESD

The shoe features a plug that improves the dissipation of static electricity and meets the ESD standard.



Slip resistant SRC

The rubber outsole provides excellent grip, both on wet and dry floors and complies with the SRC standard.



Usage

Suitable for those who walk and stand for a long time daily. So recommended for:

- Healthcare professionals
- Nurses and caregivers
- Wellness and beauty center professionals
- Homecare

Do not use to accompany patients into the shower.

Sizes

EU	36	37	38	39	40	41	42
UK	3.5	4	5	5.5	6.5	7	8
US	6	6.5	7.5	8	9	9.5	10.5